

## Neptune Bed Extension Accessory

# OPERATION MANUAL

SKU 55265



For safety reasons, please read carefully read and understand these instructions.

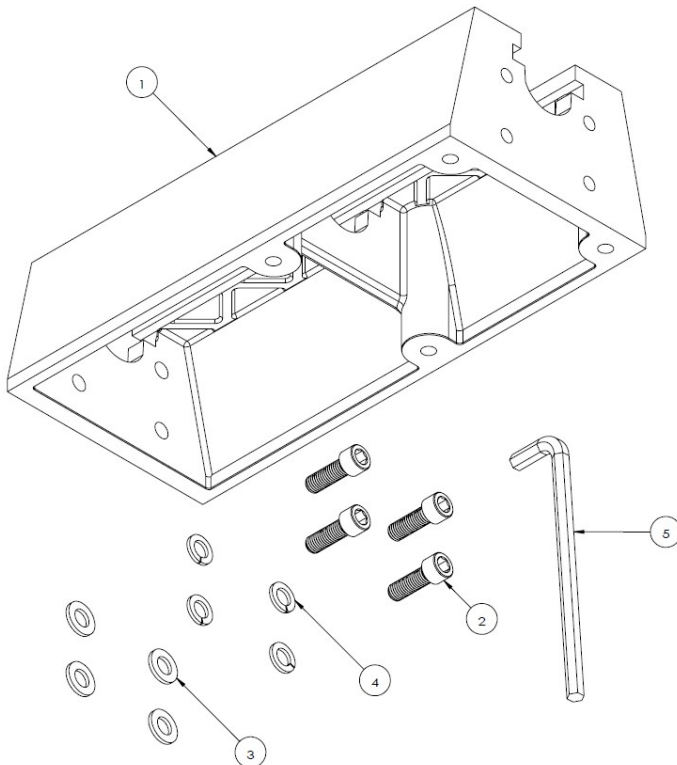
The Nova Neptune Bed Extension is designed to fit and be used only with the Nova Neptune and Neptune Max wood lathes. The use of this bed extension with other lathes could cause a malfunction and risk of serious injury, if you are unsure of the use or the application of this accessory, contact the technical support department of Teknatool International or your reseller. Further information can also be found in your lathe manual.

### Parts List:

Part	SKU	Description	Qty
1	5529125	Neptune Bed Extension	1
2	C12035	M12x35mm Cap Screws ZP	4
3	SW12	Spring Washer M12 ZP	4
4	FW12	Flat Washer M12 ZP	4
5	AK10	Allen Key 10mm	1

### Specifications:

	Metric	Imperial
<b>Overall Size</b>	408mm (L) x 180mm (w) x 114mm(H)	16.06" (L) x 7.09" (w) x 4.5" (H)
<b>Net Weight</b>	14 Kg ± 0.5 Kg	30.86lb ± 1.1 lb



For all worldwide Inquiries, Repairs or Services (issues must be in writing)

Contact us at:

<https://www.teknatool.com/support/>

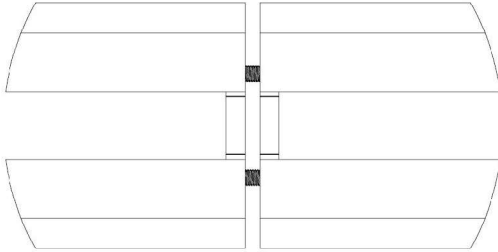


Contact Support

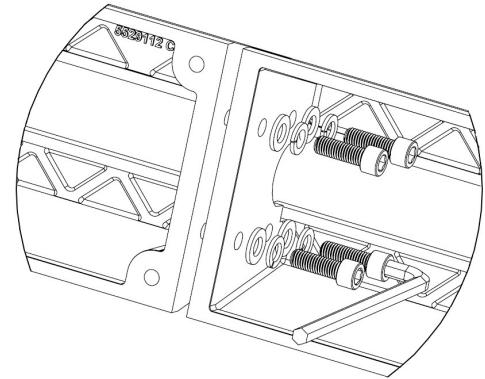
## Assembly Instructions:

1. Ensure that the bed pieces are flat and the two faces of the bed (which are to be mated) are clean, free of burrs and dents.  
Note: >>> The end of the extension bed with no feet should be mated to the lathes end face.  
>>> Also, wipe off any yellow rust protective, dirt etc. (if applicable)

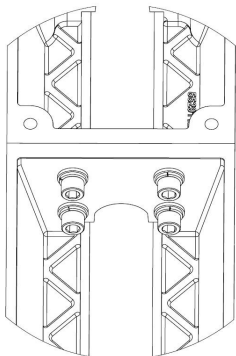
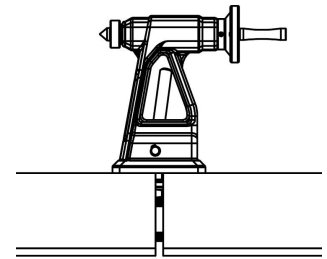
2. Place the add on bed extension close to the lathes end face, align the holes and screw on the four M12 cape screws (with one spring washer and flat washer each) into the four tapped holes with the help of the 10mm Allen key provided.



DO NOT fully tighten the cap screws at this stage, but tighten enough so that the add on bed extensions is secured to the end of the lathe.



3. Move the tailstock over the two joining extension beds (tailstock approximately covering equal length on either extension). Lock the tailstock firmly over the joining faces.
4. Now used the 10mm Allen key to fully tighten all four capscrews. The torque required is approximately 30 N-m (22 lb-ft).
5. Check that the tailstock runs smoothly over the mating joint, and over the full length of the extension. Although all components manufactured by Teknatool International are made to closest possible tolerances, it is possible for a difference of approximately 0.1mm to put the bed 'out of



true'. The tailstock can bind in any given area in tow possible ways:

a. Jamming between slides (inside the wall of the bed)

Using a smooth flat file, run over the area a few times until the tailstock frees itself. To maintain central running of the tailstock, both sides must be filed evenly.

b. The Tailstock clips or appears to jump over the join

The machines flat surfaces may not be quite flush. Use a flat file and run over the join until the 'railroad clacking' sound disappears.

**Some Notes on the Bench Top:**

Make sure that the bench top where you place your lathe to bolt down is flat, and not warped or buckled. The bed bolt points need to have flush contact with the bench.

## Teknatool Warranty



### NOVA Limited Warranty

4499 126<sup>th</sup> St North | Clearwater Florida 33762  
teknatool.com | 727.954.3433

Our policy is one of continuous improvement. We therefore reserve the right to change specification/design without notice. This warranty is Teknatool International Ltd and Teknatool USA Inc. sole warranty whether written or verbal, whether expressed or implied by law, trade, custom, or otherwise, whether of merchantability, fitness for purpose, or otherwise, except for remedies available to customers under the Consumer Guarantees Act or other legislation. For full warranty details and instructions on how to file a claim, please go to [teknatool.com](http://teknatool.com)